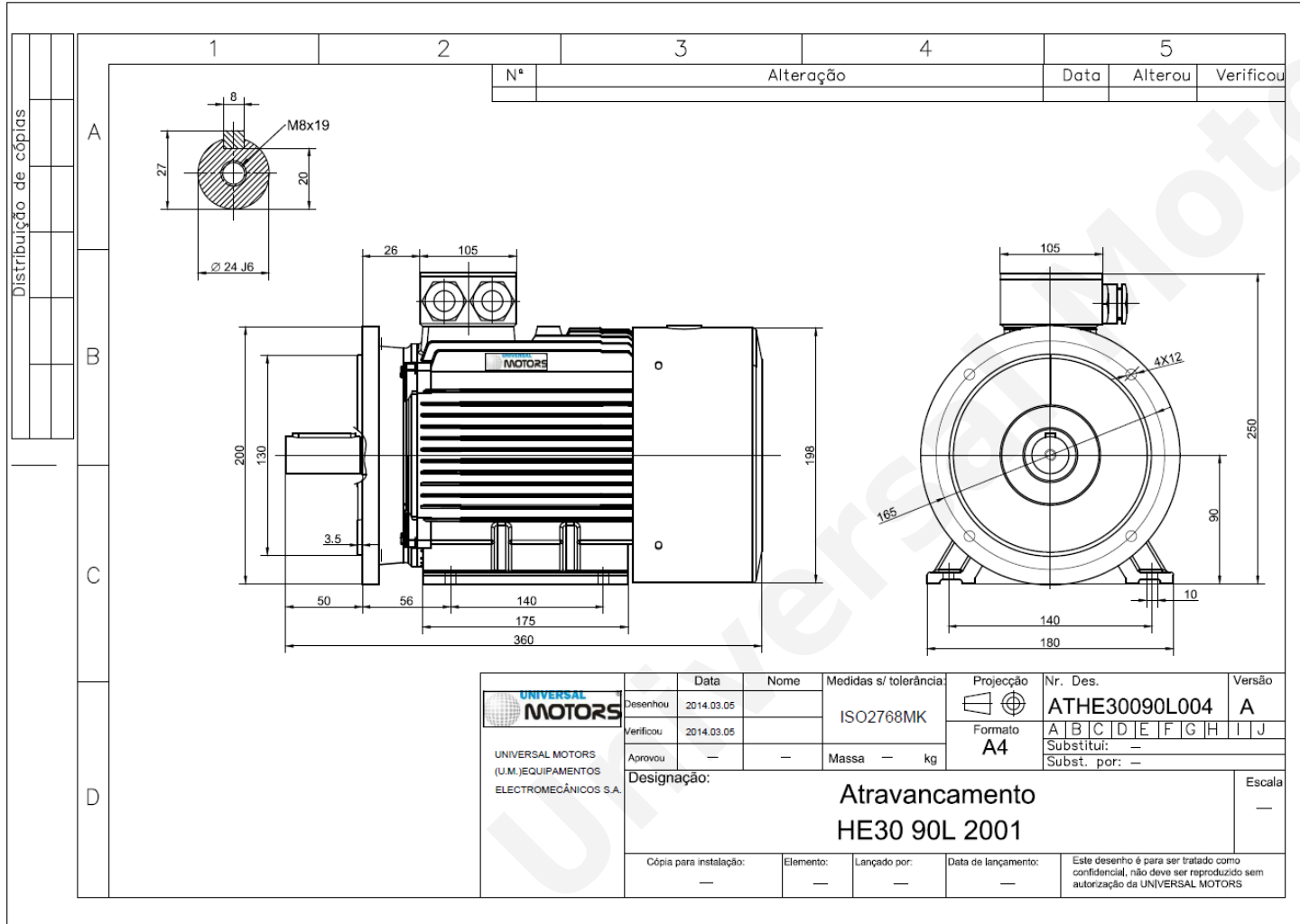




TECHNICAL DATA

Three Phase Electric Motors - Cast Iron Frame
 HE30 90 L1 4 IE2
 1.5 kW / 2 Cv
 1420 RPM



Motor type: **HE30 90 L1 4 IE2**
 Output: **1.5 kW / 2 Cv**
 Speed (min⁻¹): **1420 RPM**
 Frequency: **50 Hz**
 Voltage: **400 V**
 Current: **3.5 A**
 Power factor (Cos Ø): **0.75**
 Poles: **4**
 Insulation class: **F**
 Temperature rise Class: **B**
 Efficiency 50%: **82.0 %**
 Efficiency 75%: **83.5 %**
 Efficiency 100%: **82.8 %**
 Torque: **10.1 N.m**
 Tstarting/Tnominal: **2.3**
 Istarting/Inominal: **7.6**
 Tmaximum/Tnominal: **2.3**
 Noise: **50 Db(A)**
 Weight: **38 Kg**
 Bearing DE: **6205 2Z C3**
 Bearing NDE: **6205 2Z C3**

Regime - S1

Altitude - 1000m

Environment Temperature - 40°C

CONTACTS:

UNIVERSAL MOTORS Tel: +351 252 299 080
 Rua de São Brás,745 Fax: +351 252 299 089
 4480-782 VILA DO CONDE Mail: geral@universalmotors.pt

* References applied only in the UK